

FOLDING WALLS



Folding walls is a great option for users with high demands on flexibility. The walls is an excellent way to increase and reduce space in larger areas such as hotels, schools and offices.

# Flexibility in environments where space requirements often vary

Folding walls are the ideal choice for premises users with high demands for flexibility. In environments where space requirements often vary, folding walls are a fast effective solution. Make the most of every precious square metre with a folding wall solution from Winab.

## FOLDING WALLS GIVE YOU THE SPACE YOU NEED

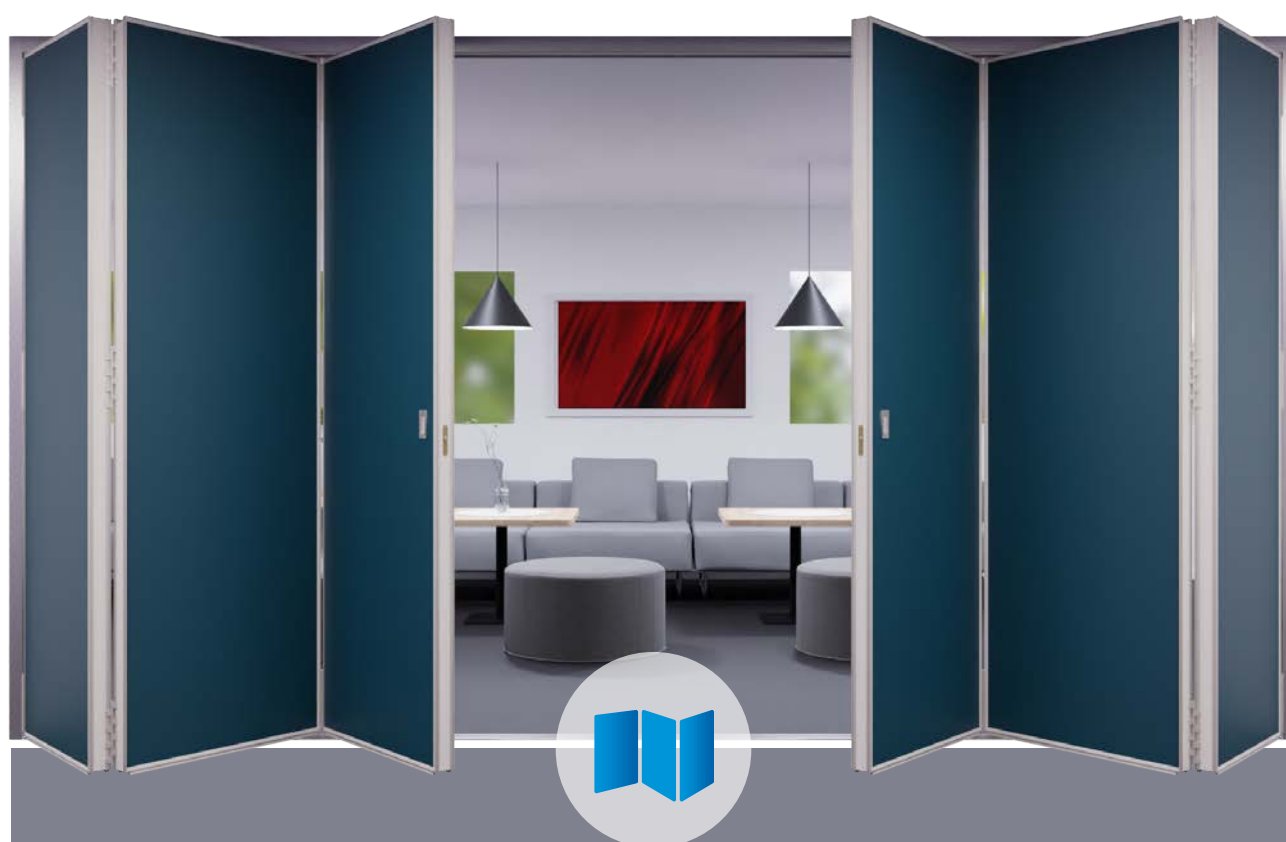
Increase the flexibility of your premises with a stylish and functional folding wall. Folding walls are advantageously used in offices, restaurants and conference environments, but also in schools or lecture halls.

The folding wall creates the conditions for room division and privacy, but is also an effective solution to achieve the sound environment that is required. Winab's folding walls are sound rated for Rw 41-52dB.

## MORE THAN JUST A WALL

With creative ideas, the flat surface of a closed wall can also give the room colour and character. The wall panels can also be used as whiteboard, projector wall or as temporary bulletin board.

To increase the openness of the floor plan, wall sections can also be given doors and window openings positioned to suit the floor plan of the room.



The wall panels can also be used as whiteboard, projector wall or as temporary bulletin board.

# 5 choices to the right folding wall

With modern technology and high flexibility, we can offer the exact solutions our customers are looking for. Most of our wall products are tailor-made and are adapted to the customers wishes in terms of size, material, and section division. Winab folding walls offer many advantages.



1

## SOUND REDUCTION

Think about the sound environment and what requirements it places. With the right material, thickness, weight, and surface we can influence the sound properties of the wall.



2

## INSTALLATION

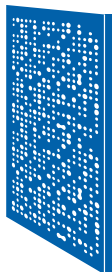
The folding wall is offered in ceiling-hung folding walls who run in a top track and floor-mounted folding walls run in a floor track with the weight resting on the floor.



3

## PARKING

We offer four parking options:  
1-wing, centre-hung folding wall.  
2-wing, centre-hung folding wall.  
1-wing, edge-hung folding wall.  
2-wing, edge-hung folding wall.



4

## DESIGN

Choose from a wide range of melamine, laminate, veneer, and painted surface in a rich variety of patterns and colours.



5

## ACCESSORIES

Adapt walls with accessories such as doors, windows, fabric or whiteboards.





## 1 Sound environment

Unwelcome sounds greatly affect our work environment. Noise disturbances are perceived by many as frustrating and often lead to stress and inefficiency at work. What is perceived as disturbing is at the same time individual. Some have a greater need for silence and seclusion than others. Winab's wall software includes solutions for all sound environments.

### SMART TECHNOLOGY PROVIDES SOUND PROPERTIES

Room size and shape as well as the acoustic properties of floors, ceilings and walls are extremely important for the room's sound environment. A folding wall from Winab consists of aluminium profiles clad with surface-treated boards, intermediate insulation and sound-absorbing material. With the right dimensioning and well-thought-out sealing technology, we can offer solutions for most sound requirements.

### DOCUMENTED SOUND REDUCTION

Winab's folding walls have been tested in laboratory. The laboratory value is denoted as  $R_w$  and differs from the field value denoted as  $R'w$ . The field value is usually 8-10 dB lower than the laboratory value. Our folding walls are sound-tested by the Swedish Testing and Research Institute and are rated with a sound reduction corresponding to  $R_w$  41 to 52 dB laboratory value.

### RIGHT ACOUSTICS GIVE THE ENVIRONMENT A BOOST

The acoustics of the room are determined by how the sound bounces between walls, floors, and ceilings. By controlling how the sound moves, the sound environment can be improved. Our Quiet Solutions programme includes smart, aesthetically pleasing absorbers with incredibly good acoustic properties. Attractive panels in a well-thought-out modular system that provides excellent opportunities for tailor-made solutions.

The panels are easy to assemble and can be combined to your liking and taste. The products have been tested at the Swedish Technical Research Institute with excellent acoustic results.

Our folding- and movable walls can be covered with specially developed sound-absorbing fabric. The material absorbs and reduces bouncing sounds in a room, the sound environment and acoustics are improved and the room is perceived as calmer. These folding walls with sound absorption have a sound reduction of 47 dB, sound absorbing movable walls can be obtained with up to 52 dB sound reduction.



| ISO 11654             |                  |          |
|-----------------------|------------------|----------|
| Product               | Absorption class | aw       |
| Wall 'Quiet Solution' | D                | 0,3 (MH) |
| Soundfabrics value    | B                | 0,8 (MH) |



Winab "Quiet Solutions" can be obtained for all Winab folding walls and Winab movable walls.

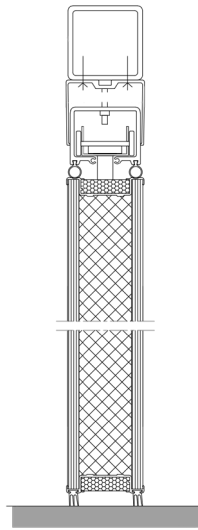
## 2 Hanging

### CEILING-HUNG WALLS

Wall elements of the desired size and section size are hung and run in a roof rail. The walls are sealed against the floor with rubber strips.

Ceiling-hung walls are offered only with centric suspension.

Folding walls can be designed as 1-leaf or 2-leaf (facing). When the wall length exceeds 10m, a 2-leaf design is recommended.



#### ADVANTAGES

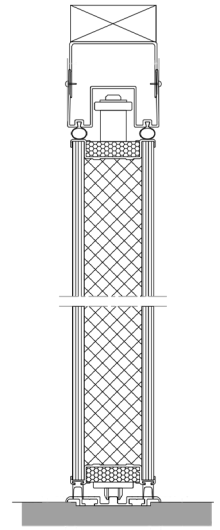
Installation of ceiling-hung folding walls take place without rails or intervention in the floor, which gives free, uninterrupted floor surfaces.

### FLOOR-MOUNTED WALLS

Floor-mounted folding walls run on ball-bearing wheels in a floor rail. The weight of the wall rests entirely on the floor and the floor rail.

A guide rail in the ceiling provides stability but does not strain the roof structure. A seal against the floor and guide rail is provided by rubber strips.

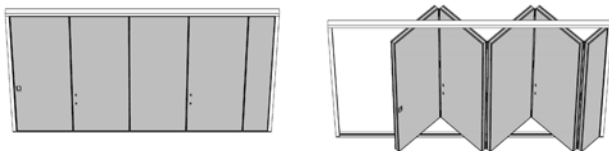
Floor-mounted folding walls are offered with centric or eccentric suspension.



#### ADVANTAGES

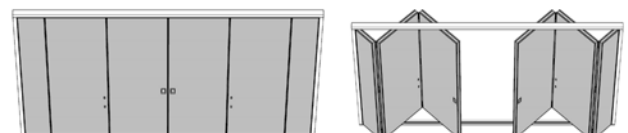
Floor-mounted folding walls do not require bearing capacity in the ceiling structure as the weight of the wall rests directly on the floor.

## 3 Parking



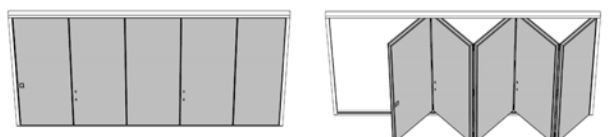
### 1-WING, CENTRE-HUNG FOLDING WALL

The parking window is positioned in the closing line with a door in the last section. Can be made as floor-mounted or ceiling-mounted.



### 2-WING, CENTRE-HUNG FOLDING WALL

The parking windows are positioned in the closing line and the door in the middle of the folding wall. Can be made as floor-mounted or ceiling-hung.



### 1-WING, EDGE-HUNG FOLDING WALL

The parking window is positioned inside the closing line and the door in the last section. Available as floor-mounted only.



### 2-WING, EDGE-HUNG FOLDING WALL

The parking windows are positioned inside the closing line and the door in the middle of the folding wall. Available as floor-mounted only.



## 4 Design

With many creative material options and colours, your folding and movable walls give the room an extra lift. Our program includes decorative, durable materials and coatings.

### LAMINATE

High-pressure laminate is a thin, impact-resistant sheet with a long service life that is pressed onto a load-bearing sheet. The laminate is offered in a wide range of colours and structures, and can be used for all wall types, sound values and variants

### MELAMINE

The melamine consists of decorative paper that has been treated with varnish, sometimes with inbound natural fibres or cellulose for increased durability.

#### Standard designs melamin



H1298 ST22  
Sand Lyon Ash



H3840 ST9  
Natural Mandal  
Maple



H3157 ST12  
Vicenza Oak



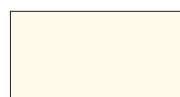
U999 ST2  
Black



U961 ST2  
Graphite Grey



U708 ST9  
Light Grey



W911 SM  
White Cream White  
smooth



W1000 ST9  
Premium White

### VENEER

Veneer is a thin layer of wood, which is applied on a carrying panel sheet. Veneer gives a natural, luxurious feel with scent of nature.

### FIREWALL

For environments that demands high fire safety, WINAB has developed fire-class folding walls, certified according to European standards. Offered in fire class EI-30.

### PAINTED SURFACE

Factory-painted folding and movable walls are offered in all NCS colors as well as in RAL and other color code systems. The factory-painted wall can easily be adapted to your environment and is an affordable option. Factory painted walls are easy to keep clean, adjust to the existing room environment and can easily be repainted if the trend changes.

### GLASS

With glass in your partition wall the feeling of open plan is combined with possibilities of privacy and a working sound environment.

### FABRIC

With decorative, replaceable fabric sections, the folding and movable walls can be given a look that is adapted to the room environment. The fabric's sound-absorbing properties simultaneously improve the acoustics in the premises. Our foldingwalls are delivered with optional standard fabric in 100% polyester with underlying light absorbent in 100% recycled polyester. Standard fabrics can be vacuum-cleaned, machine-washed or wiped with a damp cloth.



## 5 Options

Thanks to smart and appropriate options, Winab's folding walls can be developed with regard to both function and design.

### GLASS RECESSES AND FABRIC ABSORBERS

The folding walls can be designed with glass recesses and can also be ordered with fabric absorbers for an improved sound environment.

### MIX AND POWDERCOATING

The folding walls can also be designed with a mix of "dense" and glass-framed panels. Roof rails, frames and profiles can be powder-coated in any RAL colour.

### LOCKS



Standard  
4238 Boda  
Roller lock



ASSA 311\_1701  
Hook-rule lock



Eurolock  
Rule and  
rollerlock



Firewall  
ASSA 565-50 rule  
and drop piston



Abloy 4190



ASSA 311\_1707  
Hook-rule  
for 2-wing wall



ASSA 566  
Rule and roller  
lock





## PRODUCT OPTIONS

|                              |  |
|------------------------------|--|
| Sound classification         | 41 dB / 44 dB / 47 dB / 49 dB / 50 dB / 52 dB                      |
| Profile                      | Natural anodized / Optional RAL-colour                             |
| Jamb                         | RAL 9010 / Natural anodized / Black anodized / Optional RAL-colour |
| Head track                   | RAL 9010 / Natural anodized / Black anodized / Optional RAL-colour |
| Edge absorbent               | Grey / Surface of the wall / Optional RAL-colour                   |
| Surface                      | Melamine / Laminate / Painted / Veneer / Special                   |
| Handle                       | Natural anodized / Ral 9005 / Optional RAL-colour                  |
| Hinge                        | Natural anodized / Ral 9005 / Optional RAL-colour                  |
| Hinge pin                    | Natural anodized / Ral 9005 / Optional RAL-colour                  |
| Espagnolette lid             | Shiny metal / Optional RAL-colour                                  |
| Jamb sealing                 | Grey / Black / White   |
| Floor sealing                | Grey / Black   |
| Head track seal              | Grey / Black / White   |
| Sealing strip between panels | Grey / Black / White   |
| Screws                       | Stainless / Black / white / Optional RAL-colour                    |
| Floor track alu              | Natural anodized   |
| Reinforced floor track       | Natural anodized / Steel   |

# Design the folding wall based on your demands

Your partition is not only a functioning part of the environment. Contrastingly, with creative material options and colours, your folding and movable walls give the room an extra lift. Our program includes decorative, durable materials and coatings with a functionality that meets all requirements.





## Specifications

**Wall thickness:** 80 mm (applies to all folding walls)

**weight/m²:** 26-42 kg  
Determined by the requirements on sound reduction. (incl. rails and mounting details)

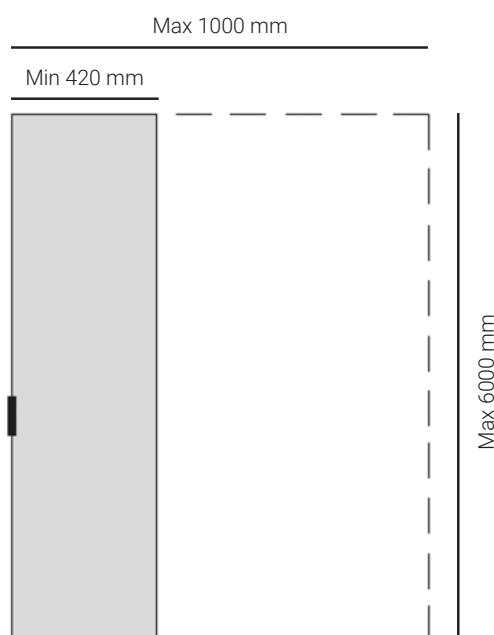
**Section width:** Min 420 mm / Max 1000 mm

**Height:** Max 6000 mm

**Surface:** As required

**Soundreduction:** Rw 41-52 dB

### Measurement range

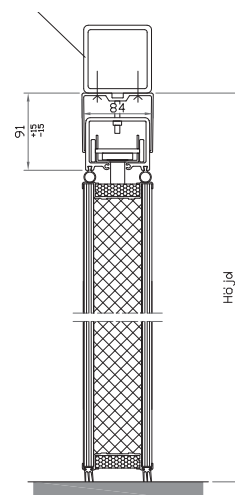


## Preparing for installation

### CEILING HUNG

Wrought iron or glulam must be dimensioned for the weight of the wall. Required for fixing of the roof rail.

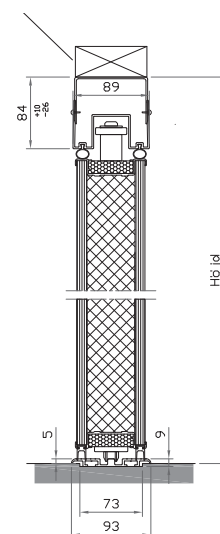
Not included in Winab's delivery.



### FLOOR-MOUNTED

Wood or similar for fastening the roof rail. The weight of the wall is taken up by the floor rail. Required for fixing the roof rail.

Not included in Winab's delivery.





## FOLDING WALLS

The folding wall is a fast and efficient solution in environments where the need for space often varies.



## GLASS FOLDING WALLS

The Glass folding wall combines flexible room division with an open impression and a generous influx of light.



## MOVABLE WALLS

The flexibility and stable construction of the top hung movable wall make it suitable in large rooms with high sound requirements.



Winab Vikväggar AB • Phone (+46) 08 -560 211 00 • [info@winab.se](mailto:info@winab.se) • [winab.se/en](http://winab.se/en)

FOLDING WALLS - MADE IN SWEDEN