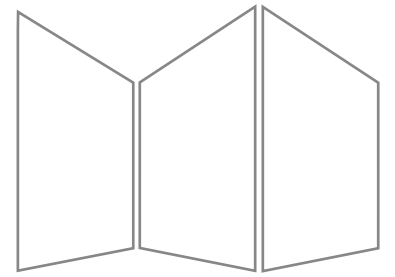


GLASS WALL



47dB

Our unique folding glass wall provides
outstanding sound levels

winab



CREATE AN ATTRACTIVE AND MODERN ENVIRONMENT WITH WINAB FOLDING GLASS WALL

The Glass Wall is a unique product on the world market. The Glass Wall provides outstanding Acoustic levels and gives an opportunity for flexible solutions which is something you wouldn't get with any other wall.

Each Glass Wall panel consists of two adjacent panes of glass, which guarantee superior sound insulation, an incredible $Rw47dB$. Regardless of this innovative feature, the wall operates in the same way as our other folding walls. The Glass Wall consists principally of glass with a choice of frame made from either natural anodized aluminium or black anodized aluminium.

Glass folding wall with sound reduction $Rw 47 dB$.

The Winab Glass Folding Wall is completely flat in the closed position and is installed in the same way as our floor mounted solid Winab Folding Wall 2000. Panels from both wall types can be combined together, creating a unique wall feature tailored to your space.

Winab offer various options when it comes to the aesthetic design of the Glass Wall, providing a feature

which is appropriately suited to the surrounding space. However, transparent Glass Wall panels allow light to be utilised effectively throughout the space.

With the Glass Wall, spaces can be divided while still maintaining full use of existing light. For example, the Glass Wall would provide an additional private area for confidential discussions, or enable a teacher to have full view of two separate classes. In an office environment, the space would be bright and open creating a contemporary work setting. With the Winab Glass Wall you obtain an attractive, modern environment suitable for offices, public areas or schools with ensured soundproofing.

Art No	dB	Weight Kg/m ²	Max Width	Max Height
30-1	47	40	950	3000



Frequency (Hz)	Curve 1 (dB)
50	≥21,6
63	≥13,9
80	≥23,1
100	≥27,2
125	≥33,8
160	31,4
200	34
250	35,5
315	38,1
400	40,8
500	44,2
630	46,7
800	48,2
1000	50,3
1250	53,2
1600	≥56,2
2000	≥57,1
2500	≥56,6
3150	≥58,4

Rw	47
(C;Ctr)	(-1;-6)
50-3150	(-3;-12)
50-5000	(-2;-12)
Rmedel	44,5
Sum. Avv.	25,9
Max Avv.	5,2
Frequency	400

DETERMINATION OF SOUND INSULATION IN LABORATORY ACCORDING TO ISO 10140-2

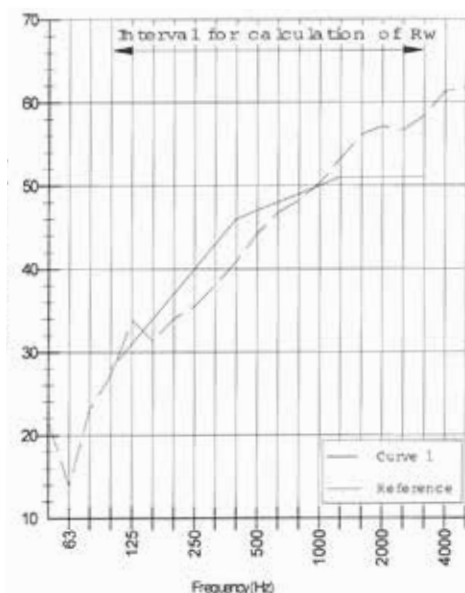
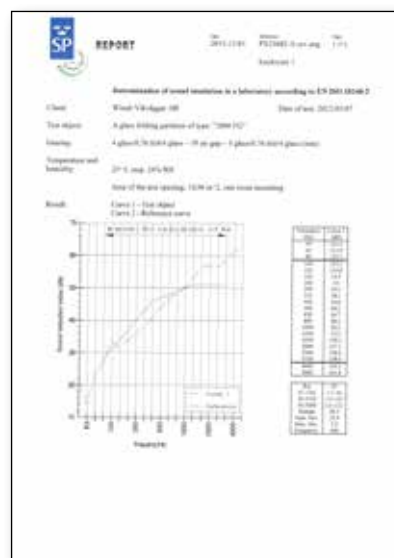
Test object: A glass folding partition of type: "2000FG"

Glazing: 4 glass/0,76 foil/4glass - 59 air gap - 4 glass/0,76 foil/4 glass (mm)

Temperature and humidity: 23° C resp 24% RH

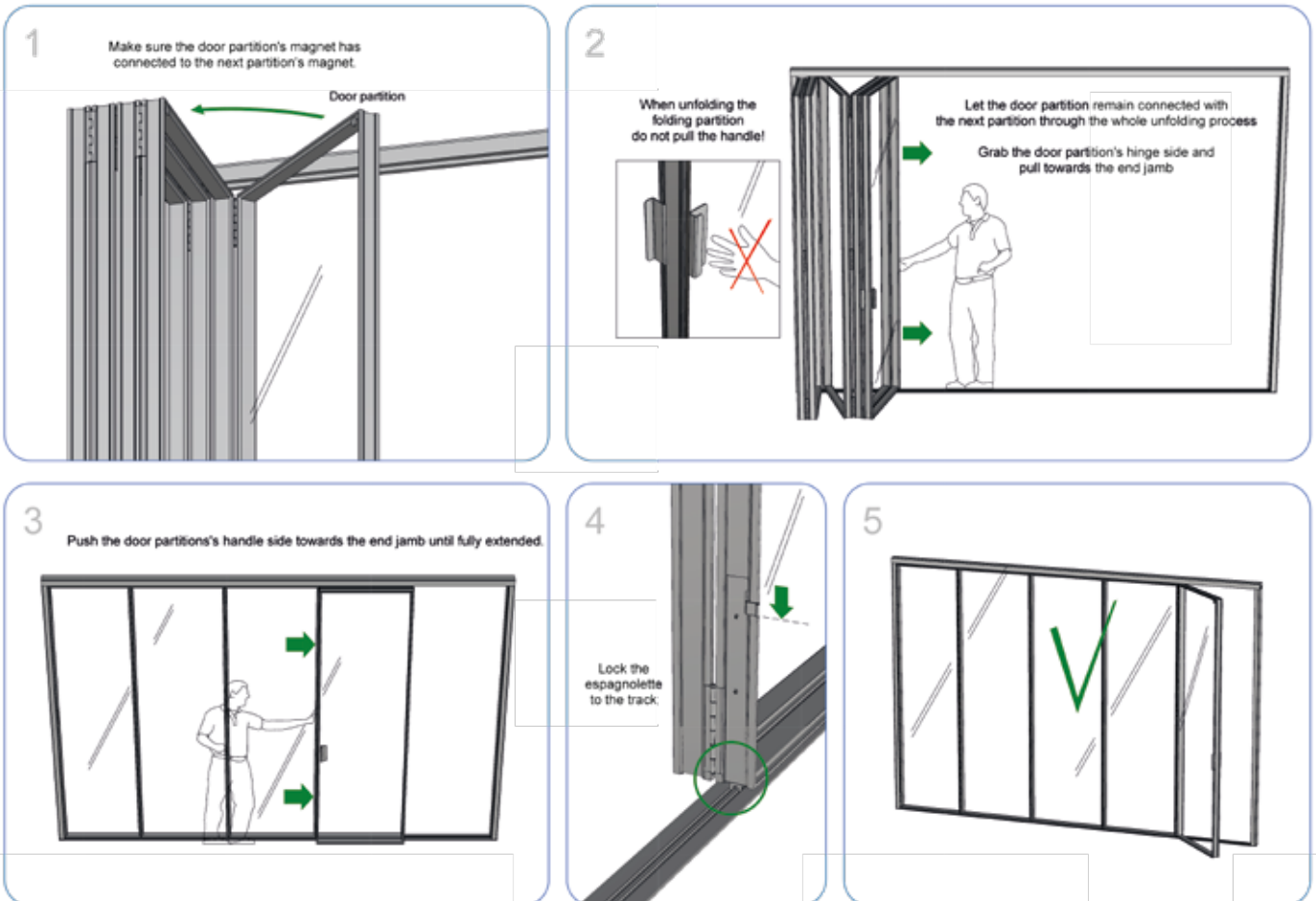
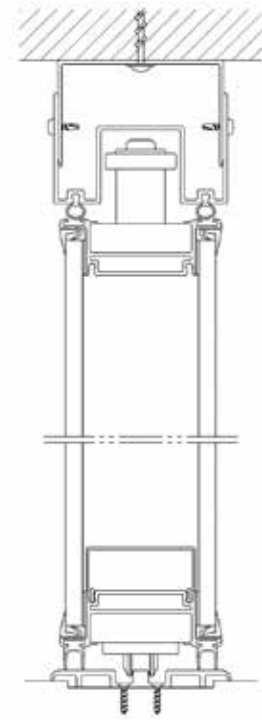
Area of the test opening: 10,96 m2, one room mounting

Result: Curve 1 - Test object
Curve 2 - Reference curve



ASSEMBLY DESCRIPTION OF WINAB GLASS WALL

1. Make sure the floor track is installed horizontally ± 1 mm.
2. Mount the start jamb with the partition standing vertically on the floor track.
3. Mount and fasten the ceiling track's U-profile to the ceiling. Make sure it is vertically positioned over the floor track. Insert both silicon seals into the ceiling track's designated slots.
4. Mount partition 2 by introducing the hinges in each other and inserting the hinge nails. In case when the top hinge nail can not be inserted from above, bend the nail slightly, approx. 2 cm under the head, and push it in from the underside
5. Continue the mounting by repeating step 4 for the remaining partitions.
6. Pull and extend the folding partition to it's full length. Lock it into position with the espagnolettes
7. Adjust the top track so that the track seals are aligned with and touches the top of all folding partitions.
8. Mount the end of the frame vertically between the floor track and the top track and make necessary width adjustments.
9. Mount the handle according to the "HANDLE MOUNTING INSTRUCTION" on the reverse side.
10. Insert soft sealant between walls - jambs and ceiling - top track to ensure a tight mounting.



WINAB VIKVÄGGAR AB

Box 38,178 21 SE-Ekerö. Visiting address: Ekerövägen, Asknäs, Sweden

Phone: +46 8-560 211 00 E-mail: info@winab.se

www.winab.com